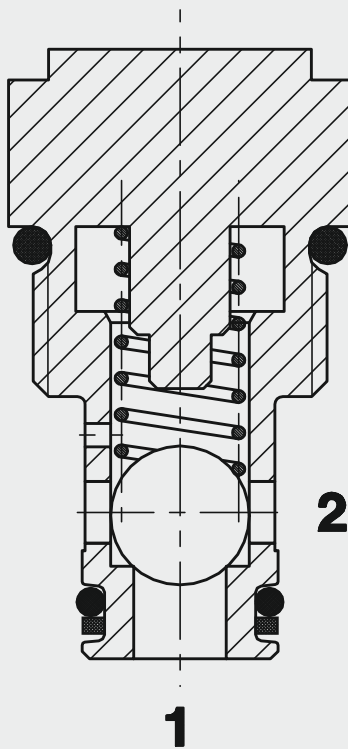


## FUNCTION



The check valve RV08A-01 is a direct-acting, spring-loaded ball poppet valve. When there is no flow through the valve, the spring holds the ball in the closed position and therefore shuts off port 2 from port 1. The valve opens when the pressure at port 1 is higher than the pressure at port 2, including the pressure created by the spring force.

## Check Valve UNF Ball Poppet Type, Direct Acting SAE-08 Cartridge – 420 bar RV08A-01

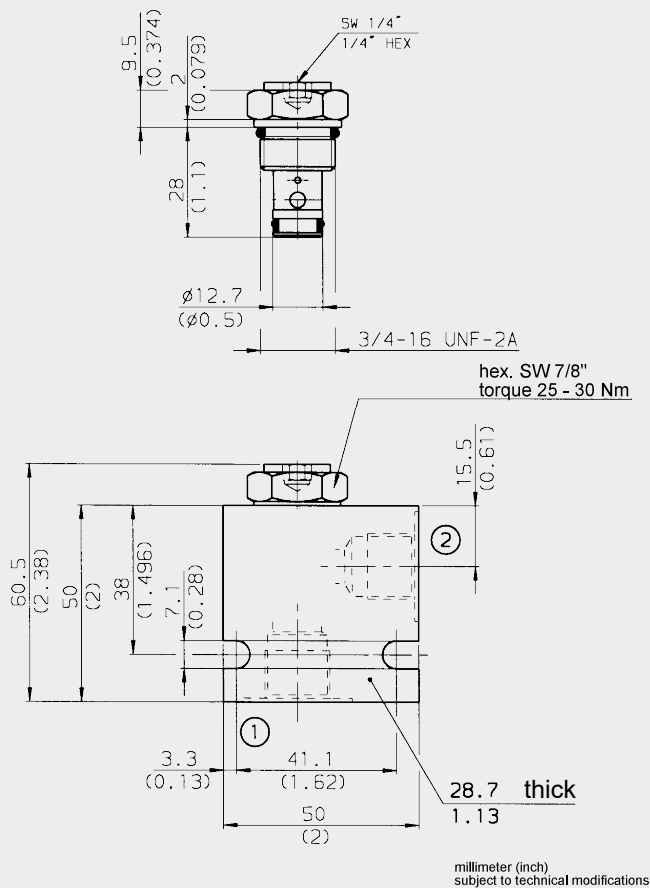
### FEATURES

- Main application is to prevent uncontrolled movement or creeping of loaded cylinders and also to shut-off sections of the system
- Excellent stability throughout the entire flow range
- External surfaces zinc-plated and corrosion-proof
- Hardened and ground internal valve components to ensure minimal wear and extended service life
- Low pressure drop due to CFD optimized flow path

### SPECIFICATIONS

Operating pressure:	max. 420 bar
Nominal flow:	max. 38 l/min
Internal leakage:	0.1 cm <sup>3</sup> /min at 420 bar
Cracking pressure:	0.35 bar 1.00 bar 2.00 bar 5.00 bar
Ambient temperature range:	min. -30 °C to max. +100 °C
Media operating temperature range:	min. -30 °C to max. +100 °C
Operating fluid:	Hydraulic oil to DIN 51524 Part 1 and 2
Viscosity range:	min. 7.4 mm <sup>2</sup> /s to max. 420 mm <sup>2</sup> /s
Filtration:	Class 21/19/16 according to ISO 4406 or cleaner
MTTF <sub>d</sub> :	150 years (see "Conditions and instructions for valves" in brochure 5.300)
Installation:	No orientation restrictions
Materials:	Valve body: steel Ball: roller bearing steel Seals: NBR (standard) FKM (optional, media temperature range -20 °C to +120 °C) Back-up rings: PTFE
Cavity:	FC08-2
Weight:	0.06 kg

## DIMENSIONS



## MODEL CODE

**RV08A-01 - C - N - 05**

**Basic model** \_\_\_\_\_  
Check valve UNF

**Body and ports\*** \_\_\_\_\_  
C = cartridge only  
SB3 = G3/8 ports, steel body  
AB3 = G3/8 ports, aluminium body

**Seals** \_\_\_\_\_  
N = NBR (standard)  
V = FKM

**Cracking pressure** \_\_\_\_\_  
05 = 0.35 bar (5 PSI)  
15 = 1.00 bar (15 PSI)  
30 = 2.00 bar (30 PSI)  
70 = 5.00 bar (70 PSI)

### Standard models

Model code	Part No.
RV08A-01-C-N-05	560084
RV08A-01-C-N-15	560085
RV08A-01-C-N-30	560086
RV08A-01-C-N-70	560087

### \* Standard in-line bodies

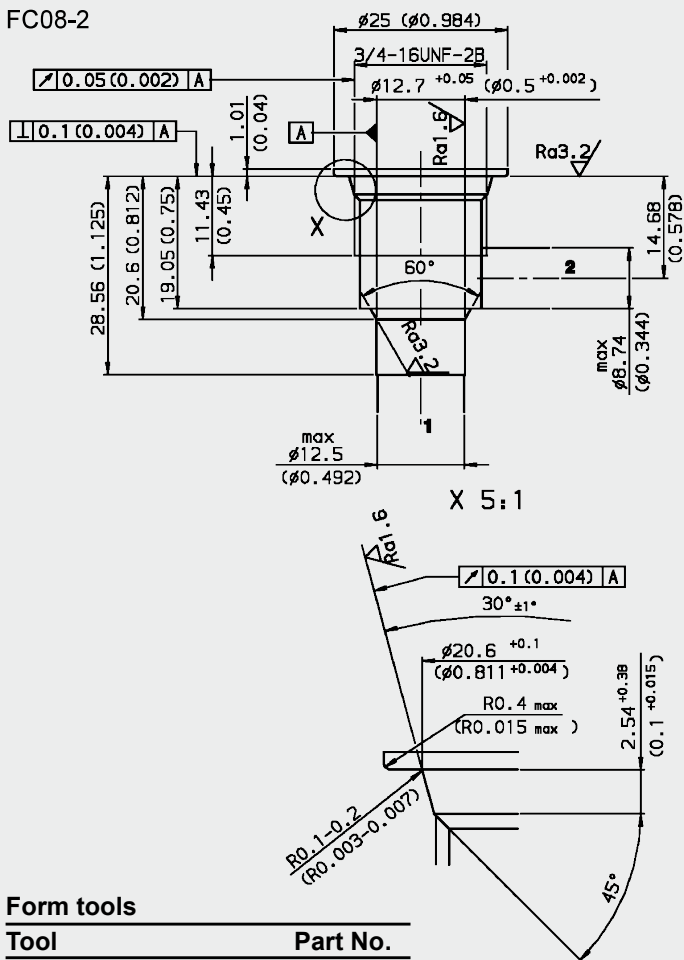
Code	Part No.	Material	Ports	Pressure
FH082-SB3	560919	Steel, zinc-plated	G3/8	420 bar
FH082-AB3	3011423	Aluminium, anodized	G3/8	210 bar

### Seal kits

Code	Material	Part No.
FH082-N Seal kit	NBR	3033920
FH082-V Seal kit	FKM	3051756

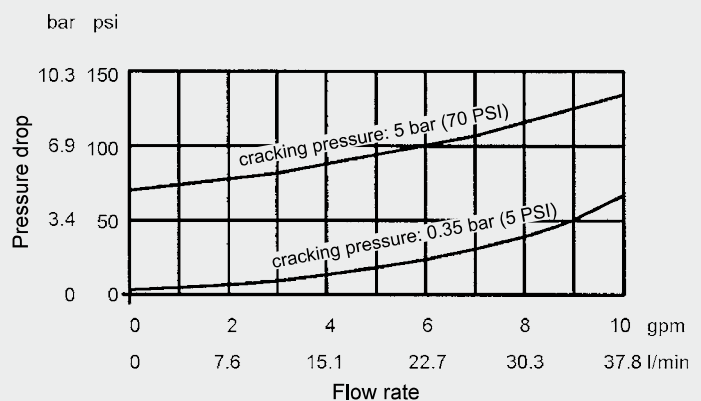
## CAVITY

FC08-2



## PERFORMANCE

Measured at  $v = 34 \text{ mm}^2/\text{s}$ ,  $T_{\text{oil}} = 46 \text{ °C}$



### Note

The information in this brochure relates to the operating conditions and applications described. For applications or operating conditions not described, please contact the relevant technical department.  
Subject to technical modifications.

**HYDAC Fluidtechnik GmbH**  
Justus-von-Liebig-Str.  
**D-66280 Sulzbach/Saar**  
Tel: 0 68 97 /509-01  
Fax: 0 68 97 /509-598  
E-Mail: flutec@hydac.com

### Form tools

Tool	Part No.
Countersink FC08-2	175473
Reamer FC08-2	175474

millimeter (inch) subject to technical modifications